

FIRE TRAINING COURSE CATALOG



Pine Technical &
Community College

CUSTOMIZED TRAINING SOLUTIONS

For More Information Please
contact

Dawn Sandberg at 320-629-5184
dawn.sandberg@pine.edu





Air Management

This is a brand new class which teaches conservation of air, timing or work cycles, and how to get maximum use out of your SCBA. We provide training from both the firefighter and command viewpoint from a safety and efficiency standpoint. This is a great class for the entire department



Aircraft Accident Response (NFPA 1003) 3 Hrs

The intent of this class is to become familiar with local Airport procedures. Students will learn how to respond to the airport, what the airport's emergency procedures are, what type of classification the airport is, and who is responsible for procedures and operations at the airport. They will also learn methods for dealing with emergencies that may take place at the airport.

Note: Pen or pencil and Notebook are needed for class.



Anhydrous Ammonia Awareness (NFPA 472) 3 Hrs

This course is for individuals who may work with, or respond to, anhydrous ammonia releases.

Students will learn:

- What anhydrous ammonia is and where it comes from and where it may be found
- The physical characteristics of anhydrous ammonia
- Understand the consequences of various exposures to anhydrous ammonia
- Know the steps to be taken if someone is overexposed to anhydrous ammonia
- Understand how to use the Department of Transportation Emergency Response Guidebook

Note: PPE and SCBA required. Pen or pencil and Notebook are needed for class.

Arson Awareness (NFPA 921) 3 Hrs

This class is designed for firefighters, fire investigators, and law enforcement officers assigned to fire investigation. This course provides the participants with an introduction and basic overview of fire scene investigation. The focus of the course is to provide information on fire scene indicators and to determine the fire's origin, report writing, legal responsibilities, evidence preservation and collection, motives, and fire fatalities. Students will learn what to be aware of during a fire incident that could be vital information for arson detection.

Note: Pen or pencil and Notebook are needed for class.



Assisting Special Rescue Teams 3 Hrs



Learn the types of special rescues encountered by fire fighters, go over steps of special rescue and learn general procedures at special rescue scenes. Describe how to safely approach and assist at these incidents:

- Vehicle or machinery rescue
- Confined space rescue
- Rope rescue
- Trench & excavation rescue
- Structural rescue
- Water or ice rescue
- Wilderness search & rescue
- Hazardous materials rescue
- Elevator or escalator rescue

Note: PPE required

For questions or to request more information, please contact Dawn Sandberg at 320-629-5184 or dawn.sandberg@pine.edu.

Auto Extrication I (NFPA 1670) 3 Hrs



This class will cover the proper use of Power tools and hand tools at an Auto Accident Scene. Students will learn how to quickly and safely extract injured person's from an auto accident, using tools effectively.

Note: PPE and SCBA required. Pen or pencil and Notebook are needed for class.

Auto Extrication II (NFPA 1670) 6 Hrs

Students will learn about new extrication tools, hydraulic equipment, and techniques. Students will study the latest technology in auto extrication. Techniques from instructors with international exposure will be covered. Safety and correct tool handling are also covered. Extensive hands on skills practice is included.

Note: Eye Protection and PPE required. Pen or pencil and Notebook are needed for class.



Blood/Airborne Pathogens 3 Hrs

This class takes a closer look at Blood/Airborne Pathogens which involves TDS's and The Right to Know.

Calling a MayDay (NFPA 1407) 3 Hrs

After taking this course the firefighter will demonstrate the ability to call a "Mayday" under various emergency situations they may find themselves in, including being trapped or lost in a room, having something collapse on them, or being hung or snagged on wires and falling through a floor or roof. These conditions will be simulated using various props with the firefighter in full PPE, SCBA, and portable radio in a blacked out face mask. Content: This course is designed to train firefighters on the proper methods to use to call for help when they find themselves in a dangerous position.

Note: PPE and SCBA required. Pen or pencil and Notebook are needed for class.

Changing the Culture of Emergency Service so that "Everyone Goes Home" 3 Hrs

Identify the need for the fire service to critically look at the issue of "culture" and how it affects safety on emergency scenes by blending the 16 Life Safety Initiatives with a dose of reality. Actual photos, videos, and post-incident reviews will illustrate the need for a change. This course is designed to have an impact on the individual emergency responders and challenges them to "think" when completing their duties.

Class A Burn Trailer (NFPA 1403) 3 Hrs

The Class A Burn Trailer is a self-contained, live burn simulation prop. The trailer is equipped with multiple safety features including temperature monitoring, multiple ventilation hatches and an automatic sprinkler system. This trailer requires the use of Class A materials (pallets and straw). The Class A Burn Trailer allows firefighters to train in one or more of the following areas: flashover/rollover recognition and prevention, interior fire attack, direct and indirect attack, fire behavior and horizontal ventilation.

Note: SCBA and PPE required. The host department is responsible for providing straw and pallets. The host department is also responsible for debris cleanup.

Cold Water/Ice Rescue - Initial & Refresher 3 Hrs Refresher , 8 Hrs Initial

Learn basic ice and open water rescue tactics; go and no-go tactics; usage of cold water rescue suits; ropes and knots; and hypothermia first aid.

Note: Cold water rescue suits required.

Clandestine Drug Lab Awareness(NFPA 472) 3 Hrs

This class is designed to provide the student with a general knowledge and recognition of drug labs, defensive considerations including incendiary devices, chemicals and explosives, as well as command and control issues associated with criminal incidents. Content: Students will gain knowledge and recognition of drug labs. Students will learn about glassware and paraphernalia used by the "cookers."

Note: Pen or pencil and Notebook are needed for class.

Coaching the Employee "Fire Officer Training" 3 Hrs

Get the most out of your team as well as prepare the next generation of officers. This course covers these objectives:

- Strategies to assist participants in identifying, addressing, dealing with, & developing positive employee coaching strategies
- Understanding change, basic human response to change, & the phases of change people go through personally and professionally
- A closer look at the effects of how we communicate, verbal & nonverbal communication & the impact of our communications
- Impact of negativity in the workplace
- Introduction of strategies designed to assist participants in identifying and correcting employee performance deficiencies
- Introduction of multiple strategies designed to assist participants in identifying and correcting non-positive employee behaviors

Course outline:

- Small group activity – What needs to change?
- Sources of stress and strain
- Impact of change and negativity
- Small group activity – How do we change it?
- Impact of communication
- Employee coaching
- Identify performance discrepancies
- Identify coaching strategies
- Implement coaching strategies
- Follow up and documentation

Confined Space Awareness (NFPA 1670) 2 Hrs **Confined Space Trailer (NFPA 1670) 3 Hrs**

This course is designed to inform the student about confined spaces are, their hazards, and how these hazards are managed with training and safe operating procedures. The student will be able to recognize a confined space, and enter the space in a safe manner.

Note: Pen or pencil and Notebook are needed for class.



Decontamination: Your Department's Responsibility 3 Hrs

Proper decontamination reduces the possibility of injury or death from exposure to these substances. This classroom course will discuss: your department's responsibility on the scene when the Regional Decontamination Truck is called; levels of PPE; and decontamination procedures used to assist the Hazardous Materials Technician. Learn to:

- Describe how the potential for secondary contamination determines the need for emergency decontamination
- Identify the types of decontamination
- Identify emergency decontamination procedures
- Identify where and how decontamination occurs
- See how the fire service responds to the release of hazardous chemicals and agents
- Learn how some chemicals/agents can injure or kill
- Discover the physical or chemical process of reducing and preventing the spread of hazardous materials by persons and equipment

The confined space trailer provides firefighters the challenge of practicing entries or rescues in a realistic, but controlled environment. Simulator capabilities include: various sized openings, vertical and horizontal chambers, changeable atmosphere for realistic air test training, practice ventilation with a visible atmosphere, various electrical devices and valve assemblies for hands-on lockout/tagout training.

Notes: SCBA, PPE and Ropes required.

Detection & Suppression Systems 3 Hrs

You will learn these aspects of suppression systems:

- Explain why firefighters should have basic understanding of fire protection systems in high capacity residential/industrial structures
- Understand and describe the basic components and functions of a fire alarm system
- Describe types of fire alarm initiation devices and where each type is most suitable
- Describe fire department's role in resetting alarms
- Explain different ways that fire alarms may be transmitted to the fire department
- Identify the four different types of sprinkler heads and the different styles of indicating valves with sprinkler systems
- Describe the operation and application of the wet-pipe, dry-pipe, preaction, and deluge automatic sprinkler systems
- Describe when and how water is shut off to a building's sprinkler system and how to stop water at a single sprinkler head
- Describe the differences between commercial and residential sprinkler systems
- Identify the three types of standpipes
- Describe problems when using a standpipe in a high-rise



Driver Operations NFPA 1002 & Review 4 Hrs

This course is yearly or bi-yearly and covers: diminishing distance; serpentine; backing and evasive maneuvering; driving and looking ahead; getting control of the adrenaline; and civil/criminal repercussions. It will also cover these topics:

- Accident prevention
- Vehicle definitions, designs and propensities
- Laws regarding driving emergency vehicles
- Accident statistics
- Acceleration/steering/braking
- Buffer zones
- Maneuvering through traffic
- Accident scene parking



Electricity & the Firefighter (NFPA 1001) 3 Hrs

This course will cover the basics of electricity and how the electricity affects the human body. Discussion on the requirements involving electrical hazards, and downed wires and rescue procedures at motor vehicle incidents. Voltage discussion will include 102/240, 277/480, and 7200. Students will discuss extinguishing methods, requirements involving electrical hazards, downed wires and rescue procedures at motor vehicle incidents. Note: PPE required. Pen or pencil and Notebook are needed for class.



Emergency Vehicle Operators Course (EVOC NFPA 1002) 6 - 8 HRS

Students will learn through classroom and behind-the wheel instruction. A heavy focus will be placed on learning to safely operate the vehicles that you drive regularly at your department. Note: PPE, SCBA and Department Vehicles required. Pen or pencil and Notebook are needed for class.



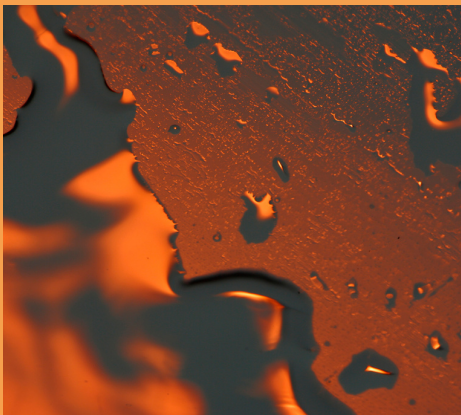
Engine Combat Drills - Refresher 3 Hrs

Rotate through a series of stations using our on-site training facilities. At the Forcible Entry station, learn how to force entry on a variety of doors. At the Ladders station, practice portable ground ladder operations and perform simulated rescue operations. At the Ventilation station, perform various types of mechanical ventilation procedures. At the Search station, conduct primary search tactics to locate victims. Students in this course will spend a majority of their day conducting hands-on, realistic training exercises. This is not a beginner's course.

Ethanol Emergencies (NFPA 472) 3 Hrs

With today's ever changing technology in vehicle fuel, this course will give students a better understanding of alternative fuel being used in today's vehicles. Students will learn the basic chemical properties of the ethanol and how it is processed, the dangers associated with fueling stations and fire emergencies involving ethanol. Students will participate in exercises that explain the different extinguishing agents required for ethanol emergencies. The purpose of the class is to create awareness of the dangers that ethanol emergencies create for firefighters.

Note: Pen or pencil and Notebook are needed for class.



Engine Company Operations

Class includes the latest techniques in hose line application including "Nozzle Forward" techniques. With short resources available on some calls class stresses "two person" crews and shows techniques for laying lines, application of hose streams, and executing an aggressive attack in a safe manner with minimum personnel. This class will have minimum lecture and lots of practical "hands on" application.



Ethanol Fire Responses: On the Road & at the Plant 3 Hrs

Learn how new technology motor vehicle fuels continue to make the safety of emergency response personnel more difficult every day. Discussion will also include information regarding primarily ethanol or other E-85 blends, and other vehicle fuels such as biodiesel. This class will highlight main functions of an ethanol plant and the precautions your fire department should take when responding to a plant emergency. The course will also cover firefighting foams: what works and what doesn't to deal with these fuels. Traditional methods of Class B Foam attacks will not necessarily work on these fuels. Learn to be prepared to handle a small/large spill of E-85 or other alternative fuels. The class includes hands-on demonstrations with a flammable liquids burn pan.

Note: Full turn-outs and SCBAs are required for participants. Because of the possibility of a large class size, not everyone may be able to dispense foam.

Ethanol, Other Alternatives & Firefighting Foams (NFPA 472) 3 Hrs

This class will highlight main functions of a plant and the precautions your fire department should take when responding to a plant emergency. Students will find out what firefighting foams will work and what will not work to deal with these different types of fuels. Students will learn how to respond to the different types of fires created by the different fuels. Note: Pen or pencil and Notebook are needed for class.

Farm Incident Extrication 8 Hrs

Be prepared! Gain an overview of farm emergencies and how to best respond to them. Hands-on rescue techniques with various rescue tools are included in the day. Topics include:

- Pre-plans for farm emergencies
- Structure types
- Tractor overturns
- Combine extrication
- Farm equipment entanglements
- Agriculture chemicals and trauma and pre-hospital care

Farm Vehicle Extrication (NFPA 1670) 3 Hrs

This course is designed to give students the techniques needed to safely size up and mitigate an emergency involving agricultural type vehicles. Students will learn the proper procedures for vehicle stabilization, patient disentanglement and removal.

Note: PPE, SCBA and a tractor is required. Pen or pencil and Notebook are needed for class.



Engine Company Operations

Class includes the latest techniques in hose line application including “Nozzle Forward” techniques. With short resources available on some calls class stresses “two person” crews and shows techniques for laying lines, application of hose streams, and executing an aggressive attack in a safe manner with minimum personnel. This class will have minimum lecture and lots of practical “hands on” application.



Fire Apparatus Operator (NFPA 1002) 12 Hrs

This course is designed to educate driver/operators who are responsible for operating fire services apparatus equipped with fire pumps. The information in this course provides the driver/operator with information that will help them perform the jobs with greater efficiency and improved safety. This course includes, but is not limited to, the following subjects: types of apparatus, water supply, mathematics, apparatus overview, apparatus maintenance, pump operation, approaching the scene, responding to an alarm, using foam, and pump performance testing. A focus will be placed on driver/operator safety and responsibility. Note: Pen or pencil and Notebook are needed for class.



Fire Behavior 3 Hrs

Explore fire load, rates of burning, where fire goes and why it goes where it does. Learn to:

- Discuss the fire tetrahedron
- Identify the physical states of matter in which fuels are found
- Describe the methods of heat transfer
- Define flash point, flame point, and ignition temperature as they relate to liquid fuel fires
- Define the relationship of vapor density and flammability limits to gas fuel fires
- Define Class A, B, C, D, and K fires
- Describe the phases of fire
- Describe the characteristics of an interior structure fire
- Discuss rollover, flashover, and back drafts
- Describe principles of thermal layering in a structure

Fire/EMS Cross Training 3 Hrs

For the Fire Portion of this class the following areas will be covered: SCBA Training, RIT Training, Communications and Fire Fighter Extraction. For the EMS Portion of this class the following areas will be covered Taking Vitals, Physical Assessments, Triage, Injury Stabilization and Transportation.

Note: This Class is a "Hands On Class" for all 3 Hours



Fire Command/Officer Training (NFPA 1002) 3 Hrs

This course will help with developing your team with guidance, team success & progressive discipline. Fire officers will properly initiate incident command & establish unified command post, assign command staff responsibilities and your firefighters will participate in roles of command staff positions, safety officer & primary entry. Students will learn the methods to help participants to internalize responsibility for success and to understand accountability for future success.

Note: Pen or pencil and Notebook are needed for class.

Firefighter Cancer Awareness 3 Hrs

Cancer is an ever-present danger that firefighters are encountering in today's modern fires. Our course is designed to offer firefighters and department personnel of all levels a basic awareness, understanding and preventative measures to begin reducing your risk today. This course was developed upon research including: Firefighter Cancer Support Network, IAFF, and the National Fallen Firefighters Foundation.

Three-hour course is designed in three modules:

1. What is Cancer- A basic description and understanding
2. Cancer within the Fire Service
3. What can we do now- A Cultural Shift for the Fire Service safety Regulations.

Firefighter Psychological Trauma & Suicide 3 Hrs

Firefighters are routinely exposed to stress-inducing and psychologically taxing situations throughout their careers. As such, they are at high risk for trauma and stress-related disorders. This may result in a host of health complications with the worst possible outcome being death by suicide, which ironically, completes a vicious circle and puts peers at risk. This educational session is designed to explore many facets of this serious phenomenon and provide the base understanding and knowledge necessary to implement a departmental prevention and mitigation program.



Fire Pump Operation (NFPA 1002) 6 Hrs

This class is designed for basic or advanced pump operations based upon current Fire Department pumpers. Emphasis will be put on water supply, water conservation, and pump control panels. Proper pump pressures for nozzles and appliances that are currently being utilized will be determined using Hydraulics and hose lay protocol. Practical portion of the class will shed light on what you are really getting for water flow while on scene. *This class will serve as part of one of a series on pump operations and serves as the foundation to more advanced and specific training.

Note: Pen or pencil and Notebook are needed for class.

Fire Grant Writing 3 Hrs

Get the latest information and tricks on writing grants for your department and how proper wording can increase your chance of an award. This class will be offered February through May before the fire grant deadline.

Fire Incident Safety (NFPA 1500) 3 Hrs

Safety is everyone's job – see it, say it, and point it out. Be the extra set of eyes and ears of Incident Safety. This class is a shorter version of ISO training. NFPA 1500 Standards. This is an overview of the basics.

Fire Pump Operations Refresher (NFPA 1002) 3 Hrs

This course covers engine tactics from response to fire extinguishment. Students will learn to determine proper attack line selection, determine hose length estimate, Determine nozzle selection, and will study nozzle team tactics. This course is recommended for all fire fighters, young and old. Students will be operating fire pumps and flowing water.

Note: PPE Required. Pen or pencil and Notebook are needed for class.



Fire Safety - Building Collapse 3 Hrs

Students will study structural characteristics and learn to recognize the signs of potential building collapse. Students will be able to match NFPA building construction types. Students will also be able to match NFPA 200 Roman numeral classifications and distinguish between various wall types.

Note: Pen or pencil and Notebook are needed for class.



Pine Technical &
Community College
CUSTOMIZED TRAINING SOLUTIONS

Fire Service Communications 3 Hrs

This course is applicable for small incident scenes and will also work on the large ones. This course will teach the proper use of the ICS on the fire ground, correct terminology, and understanding the importance of fire communications in multi-agency incidents.

Learn to:

- Describe the roles of dispatch
- Describe how to receive an emergency call
- Describe how to initiate a response
- Describe fire department radio communications and radio codes
- Describe emergency traffic and emergency evacuation signals
- Define the content requirements for basic incident reports (NFIRS)
- Define how to obtain necessary information, required coding procedures, and the consequences of incomplete and inaccurate reports
- Describe fire department procedures for answering non-emergency business and personal phone calls

Fire Service & Pollution Control Agency (NFPA 472) 3 Hrs

Fire Departments deal with hazardous materials incidents on a routine basis. Instructors will review the roles and expectations of all responders to a hazardous materials incident. Tabletop exercises will provide opportunities to discuss how your department would respond to a given incident. Case studies will be presented with depict response techniques and strategies first responders can and should use in response to these incidents.

Note: Pen or pencil and Notebook are needed for class.

Firefighter I Basic Course (NFPA 1001) 144 Hrs

Firefighter I Basic course meets NFPA 1001 standards and is a combination of Firefighter I and Firefighter II. This course, which incorporates online assessments to supplement it, includes (but is not limited to):

- Search and rescue
- Forcible entry
- Fire behavior
- Hoses, nozzles, and streams
- Firefighter tools and equipment
- SCBA (Self-Contained Breathing Apparatus)
- Wildland/ground fires
- Ladders, ropes and knots
- Haz-mat awareness/operations
- Firefighter survival
- Personal Protective Equipment (PPE)
- Fire detection systems
- Vehicle rescue and extrication



Classes are offered and sponsored at local fire stations throughout our region.

Note: PPE and SCBA required. Pen or pencil and Notebook are needed for class.

Firefighter I Review for the State Certification Testing 3 Hrs

Review the training and knowledge needed to take the Firefighter I Certification Exam. The course follows NFPA 1001 and 472 standards.



Firefighter II Course (NFPA 1001) 24 Hrs

This class provides the firefighter with the knowledge to perform under general supervision on the fire ground. This abides by the National Fire Protection Association (NFPA) 1001 Standards. After this course, the firefighter may lead a group of equal or lesser-trained personnel through the performance of a specified task. This course includes but is not limited to: water supplies; automatic sprinkler; fire cause and determination; building construction; fire alarms; foams; rescue and extrication; and salvage and overhaul. Upon completion, students take the Firefighter II Certification test which covers Haz-Mat Operations also.

Prerequisite: Successful completion of Firefighter I.

Firefighter II Review for the State Certification Testing 4 Hrs

This course will provide students with the knowledge needed to be successful when taking MSFCB Fire Instructor I Certification test. The MFSCB Hazardous Materials Certification Exam consisted of a written exam and a series of practical stations. This class will provide students with a chance to review the Fire Instructor subjects, and prepare them for the practical stations that they will be tested on during the exam. The purpose of this class is to prepare students for the certification test through knowledge and understanding of the material they will be tested on.

Note: Pen or pencil and Notebook are needed for class.



Firefighter Rehabilitation (Customized)

While your fire fighters are busy saving the lives of others, ensure that you're doing everything to help save their lives as well. Command is required to identify, examine and evaluate the physical and mental status of fire-rescue personnel who have been working at emergency incidents or training. You need to establish onsite rehab stations for the responders' safety. Help improve the unfortunate statistic that 41 fire fighters died on scene in 2012 from heart attacks and heat-related injuries. A Rehab Station is an area for firefighter recuperation at the scene. It may be equipped with beverages and chairs and isolated from environmental extremes like cold, heat, noise and smoke.

- Meet NFPA Standard 1584: The Rehabilitation Process for Firefighters
- Provide your department with firefighter rehab guidelines
- Impress upon your firefighters the importance of rehab
- Determine which staff should manage the site and implement procedures

Note: The department will receive a Firefighter Rehab kit for its truck to assist medical personnel to establish the station. This rehab course has been approved for reimbursable training funds by the Minnesota Board of Firefighter Training and Education. Training length customized to meet your needs

First Officer On-Scene (NFPA 1021) 6 Hrs

The course will cover communications on the fire ground ; ICS; overview of the situation, risk analysis: what's around me and how safe is it; how close to the edge are we without falling off and getting someone hurt; strategy of the attack; tactical objectives: size-up; ventilation; overhaul; additional problems. Students will have multiple tactical objectives such as size-up, ventilation; overhaul; additional problems on the fire ground; demobilization.

Note: Pen or pencil and Notebook are needed for class.

Foam: Class A & Class B (NFPA 1002 & 472) 3 Hrs

This course will concentrate on use of foams in fighting structural and wildland fires, agricultural products, (hay, silage, etc.), and its use for protecting exposure. This class will familiarize you with the Class "A" and Class "B" equipment and techniques needed when dealing with flammable liquids.

Note: SCBA & PPE required. Pen or pencil and Notebook are needed for class.

Forcible Entry Trailer (NFPA 1001) 3 Hrs

The forcible entry trailer is self-contained and provides students with the ability to force open and breach through a variety of residential and commercial doors and windows without damaging the equipment. The ability to reuse the facility will maximize the instructor ability to provide students with repeatable scenarios found in actual on scene conditions with minimal time between evolutions.

Note: SCBA & PPE required.

Gas Leaks: What's a Fire Department to do? (NFPA472) 3 Hrs

This class will focus on what response actions a fire department should take when dispatched to a gas leak incident. Issues such as scene approach, hose deployment, and response precautions will be covered. Who to contact & how long a fire department must remain on the scene will also be discussed. This course will create awareness of the dangers of gas leaks.

Note: Pen or pencil and Notebook are needed for class.



Hazardous Materials: Anhydrous Emergency Response 3 Hrs

Anhydrous ammonia, NH₃, is widely used in agriculture and industry. Penetrating vapors from this gas are suffocating and can lead to severe health problems, even death. This program of safety and inspection prevents accidents in the workplace and during emergency responses.

Topics include:

- Hazard properties
- New DHS reporting and security requirements
- Up-to-date standards for containers
- Risk management planning: new information on toxic endpoints for anhydrous ammonia
- Illegal use of anhydrous ammonia in meth labs
- DOT and NFPA placards and labels
- Air monitoring and ventilation
- Special problems posed by enclosed spaces
- Newest information on controlling spill vapors
- Use of water fog spray, carbon dioxide and foam to control vapors
- Protective equipment used in emergency response

Hazardous Materials: Operations Level (NFPA 472) 24 Hrs

A fire fighter's ability to recognize an incident involving hazardous materials is critical. They must possess the knowledge required to identify the presence of hazardous materials, and have an understanding of what their role is within the response plan. Hazardous Materials Operations Level will provide fire fighters and first responders with these skills and enable them to keep themselves and others safe while mitigating these potentially deadly incidents. This course will cover the following items in depth: properties and effects of hazardous materials, how to calculate potential danger and initiate a response plan, selection/use/advantages/disadvantages of personal protective equipment, mass/technical decontamination, product control, victim rescue and recovery and air monitoring.

Note: Pen or pencil and Notebook are needed for class.

Hypothermia & Cold Weather Emergencies (NFPA 1670 8 Hrs)

Participants will learn the apply basic ice and open water rescue tactics, go and no-go tactics, usage of cold water rescue suits, ropes & knots, and hypothermia first aid. Students will learn the different stages of hypothermia and the medical treatments for each.

Note: Department Rescue Suit required. Pen or pencil and Notebook are needed for class.



House Burn (NFPA 1001, 1403, 1033) 3 Hrs

This training of structural firefighters under live fire conditions & focuses on training for aggressive, coordinated interior fire suppression operations with a minimum exposure to risk for the participants. Burn instructors will take students through multiple live burn evolutions inside of the structure, following NFPA 1403.

Note: Department Engine, Tenders, SCBA and PPE required.

Impact of Attitude/Team Building *Fire Officer Training* 3 Hrs

You will cover the following objectives:

- Strategies to identify, address, deal with, and develop remedies for negativity which accompanies stress and strain in the workplace
- Strategies to deal with change
 - Basic human response to change
 - Phases of change people go through
 - How change has changed
 - Models of change(a concrete method to draw from when struggling with change)
- A closer look at the effects of how we communicate (verbal & nonverbal) and the impact
- Introduction to methods designed to help participants to internalize responsibility for success and to understand accountability for future success as the building blocks to peak productivity
- Exploration of techniques to assist participants in evaluating how current internal belief and value systems impact productivity and set the course for a positive and productive future
- The link between attitude and importance of delivering quality, consistent customer service to both internal and external customers

Course outline:

- Small group - Identify work and personal stressors
- Sources of stress and strain -- Agnew's General Strain Theory -- Gilmartin's emotional rollercoaster and hypervigilance
- Impact of change and communication
- Human response to change
- Small group - Countering workplace negativity
- Strategies to counter personal and professional negativity

Hazardous Materials: Decontamination (NFPA 1021) 3 Hrs

This class is designed to familiarize fire personnel with the procedures that they will need to understand to conduct decontamination operations at a Hazmat scene along with assisting the HazMat team. After taking this course firefighters will be able to work with the decontaminations of a HazMat incident. Hands on exercises are an important portion of this class.

Note: SCBA & PPE required. Pen or pencil and Notebook are needed for class.

Hazardous Materials: Operations Technician Refresher (NFPA 472) 3 Hrs

This is a refresher course for Hazardous Materials Technician Level. The training will be of sufficient content and duration to maintain competencies in these areas. This course is for individuals who respond to releases or potential releases for the purpose of stopping the release. They assume a more aggressive role than a first responder at the operations level in that they will approach the point of release in order to plug, patch or otherwise stop the release of a hazardous substance. This course will be on-site dealing with site-specific hazards.

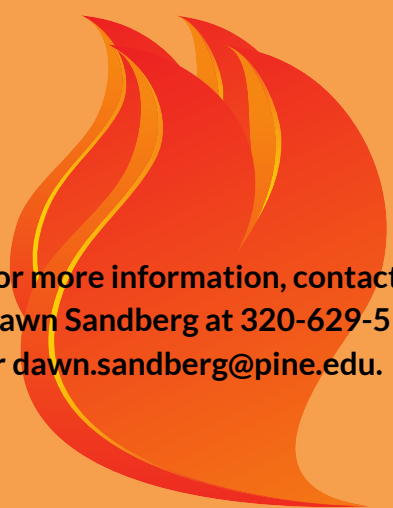
Note: SCBA required. Pen or pencil and Notebook are needed for class.



Hazardous Materials Awareness/Bloodborne Pathogens/Right to Know Ref. (NFPA 1910.1030 OSHA 1910-1200. OSHA 1910.1030 3 Hrs

The first responders at the awareness level are individuals who are likely to witness or discover a hazardous substance release and who have been trained to initiate an emergency response sequence. The class will go over specific blood borne pathogen policies and employee right to know policies and cover all the Federal and State regulations. This course will give you a better understanding of the Hazardous Substances, Blood Borne Pathogen policies & the Employee Right To Know policies.

Note: Pen or pencil and Notebook are needed for class.



For more information, contact
Dawn Sandberg at 320-629-5184
or dawn.sandberg@pine.edu.

Highway Incident Management Awareness (NFPA 1001 & 1002) 3 Hrs

Discussion will include: vehicle placement, traffic assistance, mutual aid, helicopter landing zones, creation of a safe work zone for responders and citizens alike, properties of traffic incident management, simple decisions for huge impacts. Students will learn how to respond to highway incidents in a manner that preserves the safety of responders.

Note: Pen or pencil and Notebook are needed for class.

Incident Command 700 & 100 (NFPA 1021) 4 Hrs

This course introduces and overviews the National Incident Management System (NIMS). NIMS provides a consistent nationwide template to enable all government, private-sector, and nongovernmental organizations to work together during domestic incidents.

Note: Pen or pencil and Notebook are needed for class.

Incident Response & Size-Up (NFPA 1021) 3 Hrs

This training of structural firefighters under live fire conditions & focuses on training for aggressive, coordinated interior fire suppression operations with a minimum exposure to risk for the participants. Burn instructors will take students through multiple live burn evolutions inside of the structure, following NFPA 1403.

Note: Department Engine, Tenders, SCBA and PPE required.

Incident Safety Officer Training (ISO) - Intro 3 Hrs

Students will gain the knowledge to perform the duties of the Incident Safety Officer. They will be able to identify key safety concerns related to the Safety Officer's duties and responsibilities at an incident or event and recommend solutions to the command authority. This 3-hour course examines not only the Safety Officer's duties, but every responder's safety role in emergency situations. The main focus is on the functions of a Safety Officer within the operations of an Incident Command System (ICS).

Note: Pen or pencil and Notebook are needed for class.

Ladders Refresher (NFPA 1001) 3 Hrs

Students will focus on the different carries and the raising of the ladders. How to properly climb and use ladders in fire situations will also be covered. Content: After completing this session, students will be able to identify, carry, raise, climb, inspect and maintain fire service ladders.

Note: SCBA and PPE required. Pen or pencil and Notebook are needed for class.

Lockout/Tagout (NFPA 1021) 3 Hrs

The class will go over site-specific lockout / tagout policies as well as Federal and State regulations. This course will be for authorized, affected, and other employees. The course will be done on-site with site-specific information.

Note: Pen or pencil & Notebook are needed for this class.

LP Gas Awareness - Properties & Effects (NFPA 472) 2 Hrs

This course will provide the firefighters with the hazardous characteristics of Liquefied Petroleum Gas. Students will receive classroom training that will prepare them to receive hands-on training at a later date.

Note: Pen or pencil & Notebook are needed for this class.

LP Gas Burn (NFPA 1001, 1401) 3 Hrs

The LP gas training units are completely self-contained and can be set up on your site in about 30 minutes. Available props include: 500 gallon tank, and a natural gas meter. This course will assist in ensuring the learner is qualified to act in the case of an LP burn. Note: SCBA & PPE required.

Maintenance of Air Systems 3 Hrs

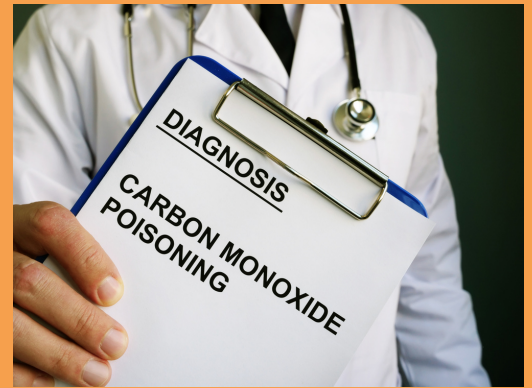
Learn your department's air compressor systems or cascade system; advantages of high pressure, bi-yearly testing requirements; maintenance and inspection of your SCBA, and air quality standards.



Managing the Carbon Monoxide Call (NFPA 472) 2 Hrs

Every year thousands of Americans are killed due to carbon monoxide poisoning. As a firefighter, do you know what to do? This class will discuss possible actions and any misconception of carbon monoxide poisoning, proper procedures and limitations of your response. This class is designed to create awareness of the dangers of carbon monoxide poisoning, and an understanding of how to respond to an incident involving carbon monoxide.

Note: Pen or pencil and Notebook are needed for class.



Modern Building Construction (NFPA 1031) 3 Hrs

Students will study structural characteristics and learn to recognize the signs of potential building collapse. Students will be able to match NFPA building construction types. Students will also be able to match NFPA 200 Roman numeral classifications and distinguish between various wall types.

Note: Pen or pencil and Notebook are needed for class.



Motor Vehicle Accident Victim Extrication 6 Hrs

Discuss and practice: use of spreading device, cutters, and other extrication tools; air bags; cribbing; disassembling; vehicle forcible entry; vehicle and victim stabilization; hazards and scene safety on the highway; hydraulic equipment tools and techniques; and patient care during extrication.

Note: PPE required



Motor Vehicle Airbag Safety for First Responders 3 Hrs

Unexpected deployment of air bags during extrication has injured many firefighters and first responders. Learn an operations overview of vehicle air bags and hazards associated with vehicle rescue. Gain excellent information regarding air bags and their deployment.



Motor Vehicle Fire Suppression 3 Hrs

Learn to describe offensive versus defensive operations, how to operate hose lines, how to ensure exposure protection, how to attack a vehicle fire, and where the danger zones are.

Note: Department provides the vehicle and pumper.



MultiGas Monitors: How to Use Them Effectively (NFPA 472) 2 Hrs

This course is designed to give the student the knowledge to perform monitoring activities at a structural fire, a strange odor call, or a minor Hazardous Materials Incident. We will discuss the limitations & strengths of the instrument, how to interpret the readings, how to calibrate/maintain the instrument, and learn to use the instrument to increase safety for the responder. Please bring your direct read instrument to class to learn how to use it to its potential. Students will learn how to use multi gas monitors effectively.

Note: Pen or pencil and Notebook are needed for class.



NFA Decision Making for Initial Company Officers (NFPA 1021) 12 Hrs

Decision Making for Initial Company Operations is designed to develop the decision making skills needed by Company Officers (COs) to accomplish assigned tactics at structure fires. All activities and scenarios used in this course are based on structure fires. As a Company Officer (CO) with the real possibility of being the first to arrive to an incident, the CO's initial decisions will have an impact throughout the entire incident. It is vital that they be able to make good management decisions that have a favorable impact on the eventual outcome. In addition to a possible role as the initial Incident Commander (IC), the CO may well be assigned a subordinate position within the ICS organization. COs need to have a clear understanding of the system, the position they are assigned, and their role in the organization if they are to function effectively and help make the system work. After completing this course students will understand the Incident Command System and to operate safely and effectively.

Note: Pen or pencil and Notebook are needed for class.

NFA Incident Safety Officer (NFPA 1021) 12 Hrs

This 2-day course examines the Safety Officer's role at emergency responses. A specific focus on operations within an Incident Command System (ICS) as a Safety Officer is a main theme. Response to all-hazards types of situations will be emphasized. This course will educate students on how to function as a Safety Officer as utilized within the incident command structure. It will also provide students with the knowledge and materials to help educate others on how to function as a Safety Officer as utilized within the incident command structure.

Note: Pen or pencil and Notebook are needed for class.

NFA Juvenile Firesetter Intervention Specialist 2 (NFPA 1035) 16 Hrs

Students will be introduced to the NFPA 1035 Juvenile Firesetter Intervention Specialist I Professional Standard. The individual will learn to develop and coordinate a child fire setting intervention program and the activities of JFIS. The course develops skills including interviewing and assessment, program development, implementation, and evaluation.

Note: Pen or pencil and Notebook are needed for class.

NFA Leadership i: Strategies for Company Success (NFPA 1021) 12 Hrs

This course provides the company officer with the basic leadership skills and tools needed to perform effectively in the fire service environment. This course includes techniques and approaches to problem solving. Students will learn about problem solving, ways to identify and assess the needs of the company officer's subordinates, and methods for running meetings.

Note: Pen or pencil and Notebook are needed for class.

NFA Leadership ii: Strategies for Personal Success (NFPA 1021) 12 Hrs

This course provides the company officer with the basic leadership skills and tools needed to perform effectively in the fire service environment. The course addresses ethics, use and abuse of power at the company officer level, creativity in the fire service environment, and management of the multiple roles of the company officer. The course addresses ethics, use and abuse of power at the company officer level.

Note: Pen or pencil and Notebook are needed for class.

NFA Leadership III: Strategies for Supervisory Success (NFPA 1021) 12 Hrs

This course provides the company officer with the basic leadership skills and tools needed to perform effectively in the fire service environment. The course covers when and how to delegate to subordinates, assess personal leadership styles through situational leadership, discipline subordinates, and apply coaching/motivating techniques. During this course students will study basic leadership skills, delegate to subordinates and assess personal leadership styles through situational leadership.

Note: Pen or pencil and Notebook are needed for class.

NFA (PICO) Preparation for Initial Company Operations 12 Hrs

This two-day course is designed to develop a better understanding of the roles and responsibilities of Company Officers (COs) in preparing their company for incident operations. In addition, this course is designed to clarify the transition from firefighter to CO and the new roles relating to leadership and safety. This course is designed for COs, acting COs, or senior firefighters responsible for the management of a single fire company at an emergency incident. This includes those officers who are responsible for company readiness, personnel safety, and leadership as it relates to company operation.

Selection Criteria:

COs, acting officers, or senior firefighters who command a fire company during emergency operations. Those officers who are responsible for maintaining skills and company readiness.

Note: Pen or pencil and Notebook are needed for class.

NFA Strategies & Tactics for Initial Company Officers (NFPA 1021) 12 Hrs

STICO is designed to meet the needs of Company Officers responsible for managing the operations of one or more companies during structural firefighting operations. STICO is designed to develop the management skills needed by company officers to accomplish assigned tactics at structure fires.

Note: Pen or pencil and Notebook are needed for class.

NFA Training Operations in Small Departments (NFPA 1021) 12 Hrs

This course is designed to provide students with some basic tools & skills to develop & coordinate training in small fire/EMS organizations. Students will study leadership issues from the fire service and marketing of training. Students will also study OSHA and NFPA impacts.

Note: Pen or pencil & Notebook are needed for class.

National Incident Management System 200 - NIMS (NFPA 1021) 3 Hrs

This course is designed to enable personnel to operate efficiently during an incident or event within the ICS. NIM 200 provides training for personnel who are likely to assume a supervisory position within the ICS.

Note: Pen or pencil and Notebook are needed for class.

Nozzles & Streams (NFPA 1001 & 1962) 6 Hrs

This class is designed to give all department members a thorough understanding of their water delivery appliances. Focus will be put on Hydraulics, Reaction Force, Reaction Torque, Nozzle pressures and effective Engine pressures based upon fire loads and application rates. Practical portion of the class will help determine the right SOP for the fire ground utilizing department's current equipment and evaluating your true water delivery through the nozzles and appliances. Students will understand how to make the proper nozzle selection and how to apply the appropriate streams.

Note: PPE required.



On Deck Air Management 3 Hrs

On-deck process consists of three basic elements:

- Work cycle management
- Air supply management
- Layering of resources

These are interrelated and reinforce each other. Keep firefighters safe, hydrated, and ready to go again.

On-Scene Fire Investigation (NFPA 1033) 12 Hrs

This class will enable the student to identify the cause of fire, based upon the identification of the area(s) or origin, physical evidence, burn patterns and knowledge of basic fire behavior. Students will learn the firefighter's role in arson investigation including suppression, overhaul, collecting and preserving evidence, etc.

Note: PPE required. Pen or pencil and Notebook are needed for class.

Personal Protective Clothing for Hazardous Materials Incidents 6 Hrs

Responders learn how to select the appropriate protective clothing for an incident.

- Discuss protective clothing application, use, and limit for structural, chemical, high temperature and flash fires
- Identify key points relating to the decontamination of personal protective clothing
- Practice proper donning, doffing, and usage of Levels A, B, and C chemical protective clothing
- Illustrate proper inspection and testing of chemical protective clothing and importance of decontamination.

Classroom will include discussion and wearing Level A and B suits.

Portable Fire Extinguishers (NFPA 1001, OSHA 1910.157 1 Hr

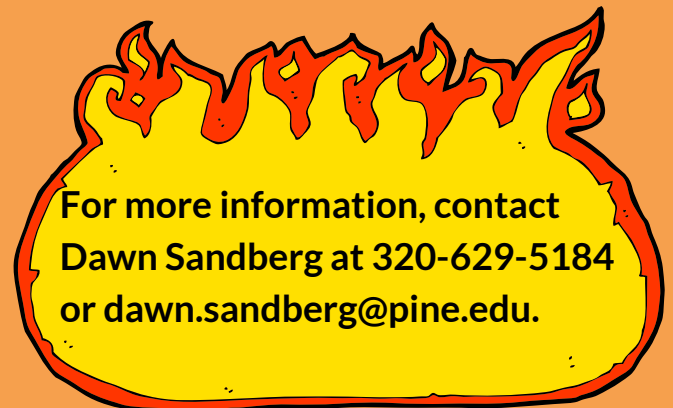
This course will cover the OSHA Fire Extinguisher Standard. Students will be required to extinguish a live fire using our training equipment. Upon completion, students will know the different classes of fires and the different types of fire extinguishers to use for each.

Note: PPE & SCBA required. Pen or pencil and Notebook are needed for class.



Positive Pressure Attack (NFPA 1002) 3 Hrs

Learn the advantages of Positive Pressure Attack and Positive Pressure Ventilation. Discussion will include using PPV and PPA successfully, when to use them, and when NOT to use them. This course is beneficial for both officers and interior crews. Full turnout gear and SCBA are required to participate in the practical. This will help firefighters improve control of the fire environment, increase firefighter visibility inside the burn, reduce heat and smoke, & make firefighter safety number one. Students will learn how to use positive pressure ventilation safely and effectively. Note: Pen or pencil and Notebook are needed for class.



For more information, contact
Dawn Sandberg at 320-629-5184
or dawn.sandberg@pine.edu.

Positive Pressure Ventilation (NFPA 1001) 3 Hrs

Does your department have a positive pressure ventilation fan that only gets used for training and seldom gets pulled out on a real call? When it does get used, is it being used effectively or is it just making noise? It is getting more and more dangerous to send people to the roof to ventilate, especially in today's world of modern building construction. Positive pressure ventilation is a powerful tool in the fire service. However, if it is not used properly, it can cause you a lot of trouble. Learn how to ventilate using positive pressure safely and effectively. Students will learn how to use positive pressure ventilation safely and effectively. Note: PPE required. Pen or pencil and Notebook are needed for class.

Progressive Discipline "Fire Officer Training 3 Hrs

Supervisor participants will:

- Explore performance discrepancies – the differences between the performance we have and the performance we want
- Learn strategies to assist, identify and correct employee performance deficiencies
- Learn strategies to identify and correct non-positive employee behaviors.

Course outline:

- Small group activity – Identify performance discrepancies
- Explore performance discrepancies
 - Do employees know what is expected?
 - Do they have the tools?
 - Is the correct feedback in place
 - Is the reward system right side up?
 - Do they know how to do tasks?
- Impact of and barriers to documentation
- Communicating expectations and the process
- Action Plan suggested steps

Propane Properties & Tactics 2 Hrs

This course covers properties of Liquid Propane (LP), storage systems and equipment, testing, monitoring, and suppression tactics both defensive and offensive.

Note: Available at no cost through the Minnesota Propane Association.



Protection & Detection System (NFPA 1001) 3 Hrs

Students will learn to identify and properly operate various public alerting systems, list the basic information about public alerting systems, select from a list of functions performed by private alarm signaling devices. Students will learn about various public alerting systems. Fire alarm signaling systems will also be discussed.

Note: PPE & SCBA required. Pen or pencil and Notebook are needed for class.

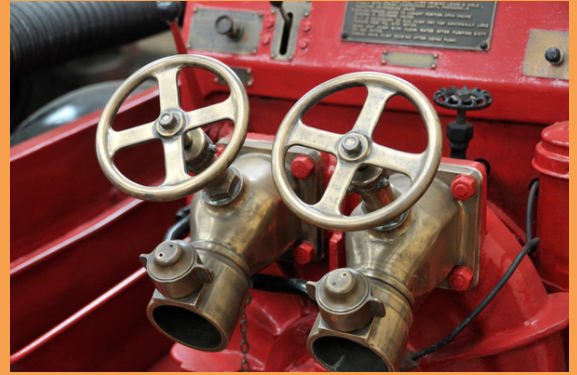


Pump Operations - Advanced (NFPA 1002)

6 Hrs

Students will learn the value of large diameter hose (LDH) and will cover the proper use of equipment to supply large volumes of water. Students will review the operation of multiple hose lines, tandem pumping, relay pumping, basic hydraulics, water flow, and learn advanced skills. This class will involve classroom and hands on training. Students will study areas of water supply, multiple line operations, master streams, relay pumping, etc.

Note: PPE required. Pen or pencil and Notebook are needed for class.



Reading Smoke (NFPA 1021) 3 Hrs

This class will help you discover the location of a fire, building collapse potential, and the likelihood of a hostile fire even like flashover. Students will learn about the dangers of smoke, the smoke is actually a fuel, how fuel loads and the fuels themselves have changed, and that fuels have definite trigger points.

Note: Pen or pencil and Notebook are needed for class.



Rescue from Storage Bins & Silos (NFPA 1670) 6 Hrs

This course will cover rescue operations from storage facilities and agricultural silos and will conclude with a confined space entry and rescue scenario. Students will learn about confined space entry and rescue situations. Strategies for emergency operations will be demonstrated.

Note: PPE & SCBA required. Pen or pencil and Notebook are needed for class.

Respiratory Fit Testing (NFPA 1404, 1500 & 1910.134) 3 Hrs

Students will learn about hazardous atmospheres and will be fit tested for those hazards. Along with fit testing, we are also able to provide the necessary medical questionnaire forms. Content: Students will learn about air purifying respirators, atmosphere supply respirators, airline respirators, SCBA, and proper respiratory selection. We offer fit testing for SCBA, N95, and 1870 masks. SCBA fit testing can be done for the following manufacturers: Draeger, Scott, MSA, ISI and 3M. Note: PPE & SCBA required. Pen or pencil and Notebook are needed for class.

For more information, contact
Dawn Sandberg at 320-629-5184
or dawn.sandberg@pine.edu.



RIT Team Development (NFPA 1407) 3 Hrs

This course is designed to explain the procedures in developing and implementing a RIT Team. Students will study how to develop a RIT team, focusing on concepts for smaller departments.

Note: Pen or pencil and Notebook are needed for class.

RIT/Rescue Techniques

This course can be one or two sessions, in which we do brief lecture, and practical skills on RIT and self-rescue techniques. A one night class would focus more on practical skills. It requires the RIT training prop which is a box sized container with various openings and portable props. We would run multiple stations on this to keep everybody moving. Trailer is sized so that we could do in fire station if it fits and makes bad weather a non-issue.

Rope Rescue (NFPA 1001 & 1670) 3 hrs

This course will cover the basics of rope care, maintenance and usage as well as basic skills on tying and utilizing knots to conduct a variety of rope rescue techniques as specified in the NFPA 100 standard. Students will gain a level of conformability when working with rope and will learn how to operate safely while conducting rope rescue operations.

Note: Pen or pencil and Notebook are needed for class.



Rural Firefighting Operations (NFPA 1021) 3 Hrs

This course focuses on how rural fire departments can deal with their specific problems to provide the fire and emergency services their specific service areas require, while maximizing the effectiveness and safety of limited resources and personnel. Students will learn valuable information that they can implement during an emergency response in a rural setting.

Note: Pen or pencil and Notebook are needed for class.

Rural Pump Operations (NFPA 1002) 3 Hrs

This course focuses on providing the rural pump operator the skills needed to deliver firefighting water supplies in the rural area. Rural pump operators must be proficient in drafting operations, relay pumping operations, supplying tanker/tender fill sites, the use of portable pumps, and other specialized pumping operations used on the rural fire ground or emergency scene. Attendees should already have experience operating fire department pumpers. Students will learn to deliver firefighting water supplies in the rural area.

Note: Pen or pencil and Notebook are needed for class.

SCBA Refresher (NFPA 1001, 1404, 1981 & 1982) 3 Hrs

This course will cover donning, doffing, usage; care, maintenance, and inspection of self-contained breathing apparatus (SCBA). Upon completion, students will be fluent in all aspects of their self-contained breathing apparatus (SCBA).

Note: PPE & SCBA required.

SCBA Trailer (NFPA 1001) 3 Hrs

Self-contained breathing apparatus (SCBA) forms part of the respiratory equipment used in fire fighting and industry. Regular training under extreme conditions involving exposure to physical and mental stress enables SCBA users to gain practical experiences and increase their safety. This training program is designed to meet these needs and to permit SCBA users to train under conditions of physical and mental stress. Consequently, the training program is not easy and the trainee must be in good health to participate. The mobile SCBA trailer is completely self-contained inside a 45-foot trailer. The unit is designed for training emergency response, industrial, and utility personnel who may be called upon to use respiratory equipment.

Note: PPE & SCBA required.

Search & Rescue (NFPA 1001) 3 Hrs

After completing this training, the student will be prepared to safely conduct a search and rescue operation in a structure. The primary focus of this class is hands on training. Students will cover victim removal, safety guidelines for search operations within buildings and facts about firefighters who become trapped or disoriented.

Note: PPE & SCBA required. Pen or pencil and Notebook are needed for class.

Through the Smoke 3 Hrs

Smoke can kill you now or later. Understand the dangers of hydrogen cyanide and carbon monoxide on the human body and learn the possibilities of exposure. Learn about the conditions, temperatures, ventilation, and oxygen levels as well as asphyxiates and deadly gases. Explore monitoring and treatment techniques, best practices, and preventative Standard Operating Procedures and Guidelines.

USAR (Urban Search & Rescue) (NFPA 1672) 3 Hrs

The Urban Search & Rescue (USAR) Training Trailer is designed to accommodate training which provides for safety first, allowing your department to conduct realistic training scenarios and simulations. Students will use hand and power rescue tools to breach through multiple entrances and different types of openings. The USAR trailer can be set-up to provide multiple levels of difficulty, for the beginner to advanced technical rescue. Simulator capabilities include: shoring, confined space, use of hand tools, rope rescue, breaching (concrete, block, wood, and steel), search/rescue in smoke filled interior, variable interior configurations, ventilation, specialized tool handling, and SCBA use.

Note: PPE & SCBA required.

Vehicles & Alternative Fuels(NFPA 1670) 3 Hrs

New technology in motor vehicle fuels continue to make the safety of emergency response personnel more difficult to deal with every day. This course will highlight the newest vehicle power fuels in use today. Students will learn about the newest in fuels for vehicles today—whether electric, vehicle. E85 blend will be discussed.

Note: Pen or pencil and Notebook are needed for class.

Ventilation Classroom 3 Hrs

Explore the theory, importance and timing of venting the hot gases and smoke from a structure. Positive pressure, negative pressure and natural ventilation tactics will be demonstrated. This course will also cover positive pressure ventilation and positive pressure attack, and how it can work for you.

Ventilation Training (NFPA 1001) 3 Hrs

The Ventilation Trailer will allow you the ability to evaluate firefighter performance under safe, realistic conditions in an organized manner. This environmentally-safe ventilation trailer offers practice on flat roofs, 7-12" pitch roofs and 12-12" pitch roofs, rafter locations of 16" or 24" on center, flat or vaulted ceiling styles. With the ability to control the fire conditions, there is great flexibility to adjust the training level to the individual needs of the trainees. The Ventilation Trailer is completely self-contained. Note: PPE & SCBA required. The host department is responsible for debris cleanup. Pen or pencil and Notebook are needed for class.

Water Rescue 4 Hrs

Learn boat and shore-based rescues, boat handling, use of rescue divers, and water dynamics.

Water Supply 3 Hrs

Participants will learn to do the following:

- Describe the sources of water for a municipal water supply system and major features of a municipal water distribution system
- Describe dry-barrel and wet-barrel fire hydrants, operating, maintaining and testing a hydrant
- Define static pressure, residual pressure, and flow pressure in water systems
- Discuss rural water supplies



Wildland Fire Control (NFPA 1051) 3 Hrs

This class will discuss wildland fire control and how to use a variety of information to make control decisions. Upon completion, students will be able to determine factors that influence fire behavior, and will know how to use that information to make control decisions and determine appropriate fire ground tactics.

Note: Pen or pencil and Notebook are needed for class.

Will It Stay Standing (NFPA 1031) 3 Hrs

Buildings on fire fail much faster than they used to. This class will identify some of the reasons that this is happening and will provide students with the knowledge required to accurately determine the stability of these buildings, and to identify the warning signs that may be present before they fail. It is important to make the call to evacuate early enough to allow your crew to escape! This course will provide the knowledge necessary to allow emergency responses personnel the ability to accurately identify the warning signs that may be present that could indicate possible building failure.

Note: Pen or pencil and Notebook are needed for class.

***Don't see the training you want?
Pine Technical & Community College is
continually developing new curriculum to meet
the ever-changing needs of fire departments.***

***Contact Dawn Sandberg today at:
320-629-5184 or Dawn.Sandberg@pine.edu***



**Pine Technical &
Community College**
CONTINUING EDUCATION
& CUSTOMIZED TRAINING